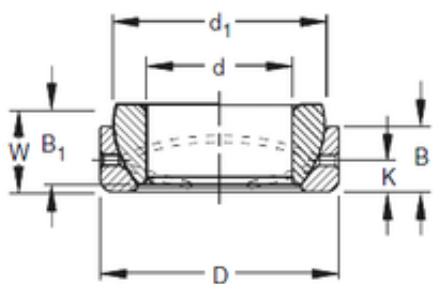


Bearing No. 12SBT20



D	50,8 mm
d	31.75 mm
C	13,97 mm
B1	17,78 mm
d1	18,8 mm
Size (mm)	31.75x50.8x13.97
Width (mm)	13,97
Bearing number	12SBT20
Bore Diameter (mm)	31.75
Outer Diameter (mm)	50,8