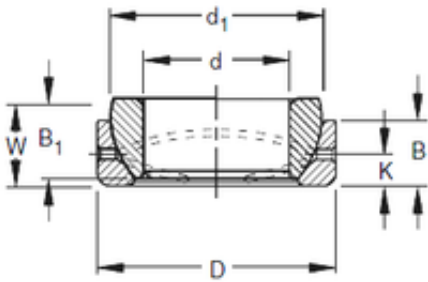


Bearing No. 30SBT48



D	120,65 mm
d	76,2 mm
C	35,69 mm
B1	43,43 mm
d1	47,24 mm
Size (mm)	76.2x120.65x35.69
Width (mm)	35,69
Bearing number	30SBT48
Bore Diameter (mm)	76,2
Outer Diameter (mm)	120,65