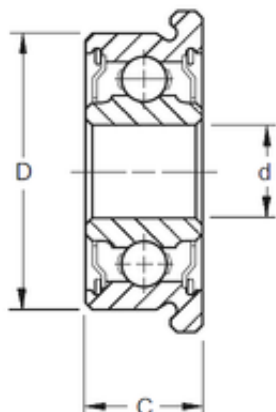


### Bearing No. F6001-2RS



D	28 mm
d	12 mm
B	8 mm
C	8 mm
Weight	0,024 Kg
Size (mm)	12x28x8
Width (mm)	8
Bearing number	F6001-2RS
Bore Diameter (mm)	12
Outer Diameter (mm)	28
Basic dynamic load rating (C)	5,1 kN
Basic static load rating (C0)	2,37 kN