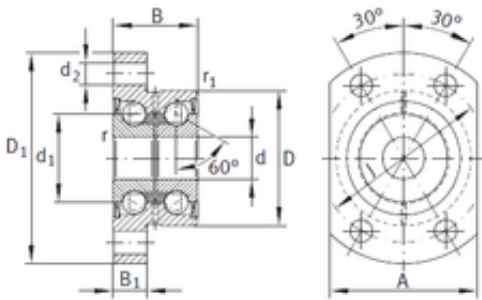


Bearing No. ZKLFA1263-2Z



J	53 mm
A	45 mm
d	12 mm
D	42 mm
B	25 mm
C	25 mm
d1	25 mm
D1	63 mm
B2	10 mm
d2	6,8 mm
Screw	M6
da max	31 mm
r min.	0,3 mm
Weight	0,3 Kg
da min.	16 mm
r1 min.	0,6 mm
Angle (?)	60 °
Size (mm)	12x42x25
Width (mm)	25
Bearing number	ZKLFA1263-2Z
Bore Diameter (mm)	12
Outer Diameter (mm)	42
Dynamic load rating axial (C)	16,9 kN
Static load rating axial (C0)	24,7 kN