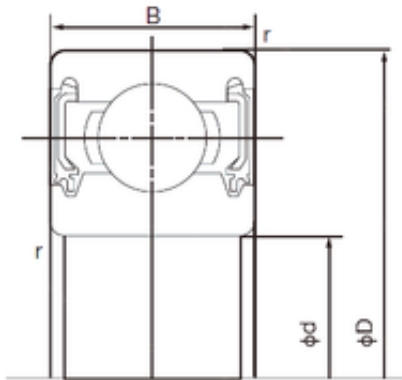


Bearing No. 6304-2NKE



D	52 mm
d	20 mm
B	15 mm
C	15 mm
r min.	1.1 mm
Weight	0.144 Kg
da min.	27 mm
Da max.	45 mm
ra max.	1.1 mm
Size (mm)	20x52x15
Width (mm)	15
Bearing number	6304-2NKE
Bore Diameter (mm)	20
Outer Diameter (mm)	52
Basic dynamic load rating (C)	15,9 kN
Basic static load rating (C0)	7,9 kN