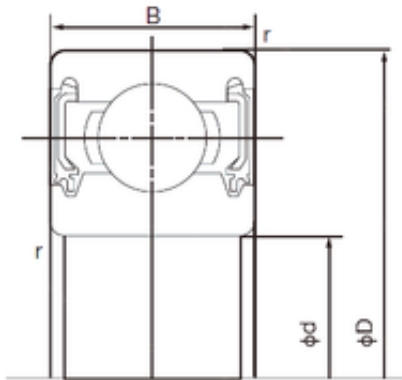


Bearing No. 6307-2NKE



D	80 mm
d	35 mm
B	21 mm
C	21 mm
r min.	1.5 mm
Weight	0.457 Kg
da min.	44 mm
Da max.	71 mm
ra max.	1.5 mm
Size (mm)	35x80x21
Width (mm)	21
Bearing number	6307-2NKE
Bore Diameter (mm)	35
Outer Diameter (mm)	80
Basic dynamic load rating (C)	33,5 kN
Basic static load rating (C0)	19,2 kN