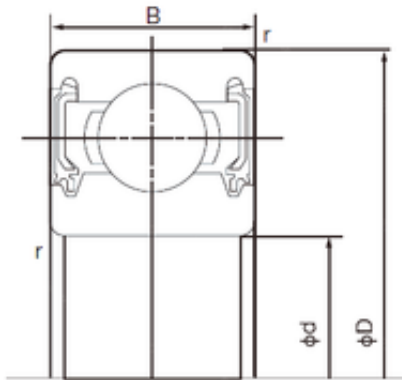


Bearing No. 6312-2NKE



D	130 mm
d	60 mm
B	31 mm
C	31 mm
Width	31 mm
Weight	1.70 Kg
r min.	2.1 mm
da min.	72 mm
ra max.	2.0 mm
Da max.	118 mm
ra (max)	2 mm
da (min)	72 mm
Da (max)	118 mm
Factor fo	13.2
Size (mm)	60x130x31
Bore Type	Cylindrical Bore
Enclosure	Double Seal
Bore Size	60 mm
Width (mm)	31
Configuration	Single Row
Bearing number	6312-2NKE
Outside Diameter	130 mm
Radial Clearance	0.008 to 0.028 mm
Static Load Rating	52,000 N
Bore Diameter (mm)	60
Dynamic Load Rating	82,000 N
Outer Diameter (mm)	130
Limiting Speed - Grease	5,400 rpm
Basic dynamic load rating (C)	82 kN

Basic static load rating (C0)	52 kN
----------------------------------	-------