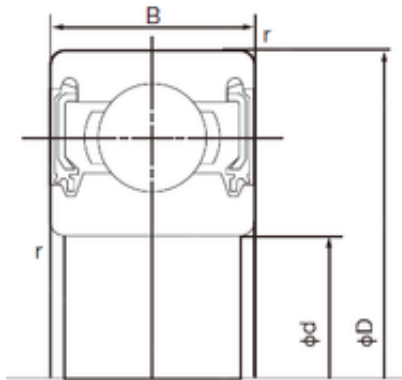


Bearing No. 6910-2NKE



D	72 mm
d	50 mm
B	12 mm
C	12 mm
r min.	0.6 mm
Weight	0.125 Kg
da min.	54 mm
Da max.	68 mm
ra max.	0.6 mm
Size (mm)	50x72x12
Width (mm)	12
Bearing number	6910-2NKE
Bore Diameter (mm)	50
Outer Diameter (mm)	72
Basic dynamic load rating (C)	14,5 kN
Basic static load rating (C0)	11,7 kN