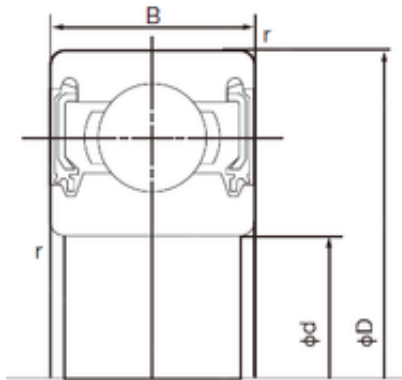


Bearing No. 6909-2NKE



D	68 mm
d	45 mm
B	12 mm
C	12 mm
r min.	0.6 mm
Weight	0.122 Kg
da min.	49 mm
Da max.	64 mm
ra max.	0.6 mm
Size (mm)	45x68x12
Width (mm)	12
Bearing number	6909-2NKE
Bore Diameter (mm)	45
Outer Diameter (mm)	68
Basic dynamic load rating (C)	14,1 kN
Basic static load rating (C0)	10,9 kN