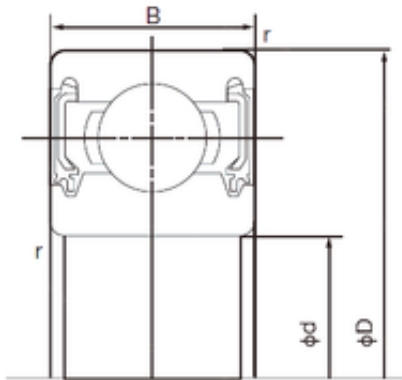


Bearing No. 6316-2NK



D	170 mm
d	80 mm
B	39 mm
C	39 mm
Width	39 mm
Weight	3.59 Kg
r min.	2.1 mm
da min.	92 mm
ra max.	2.0 mm
Da max.	158 mm
ra (max)	2 mm
da (min)	92 mm
Da (max)	158 mm
Factor fo	13.2
Size (mm)	80x170x39
Bore Type	Cylindrical Bore
Enclosure	Double Seal
Bore Size	80 mm
Width (mm)	39
Configuration	Single Row
Bearing number	6316-2NK
Outside Diameter	170 mm
Radial Clearance	0.010 to 0.030 mm
Static Load Rating	86,500 N
Bore Diameter (mm)	80
Dynamic Load Rating	123,000 N
Outer Diameter (mm)	170
Limiting Speed - Grease	4,000 rpm
Basic dynamic load rating (C)	123 kN

Basic static load rating (C0)	86,5 kN
----------------------------------	---------