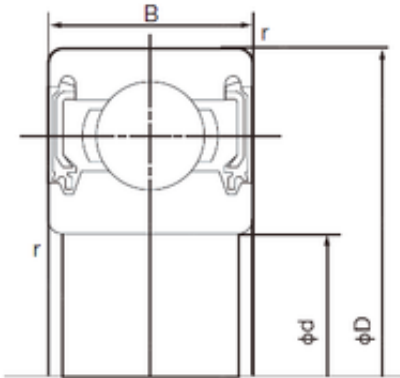


Bearing No. 6903-2NKE



D	30 mm
d	17 mm
B	7 mm
C	7 mm
r min.	0.3 mm
Weight	0.018 Kg
da min.	19 mm
Da max.	28 mm
ra max.	0.3 mm
Size (mm)	17x30x7
Width (mm)	7
Bearing number	6903-2NKE
Bore Diameter (mm)	17
Outer Diameter (mm)	30
Basic dynamic load rating (C)	4,6 kN
Basic static load rating (C0)	2,55 kN