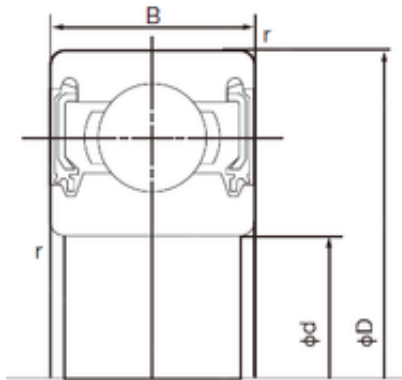


Bearing No. 6900-2NKE



D	22 mm
d	10 mm
B	6 mm
C	6 mm
r min.	0.3 mm
Weight	0.009 Kg
da min.	12 mm
Da max.	20 mm
ra max.	0.3 mm
Size (mm)	10x22x6
Width (mm)	6
Bearing number	6900-2NKE
Bore Diameter (mm)	10
Outer Diameter (mm)	22
Basic dynamic load rating (C)	2,49 kN
Basic static load rating (C0)	1,13 kN