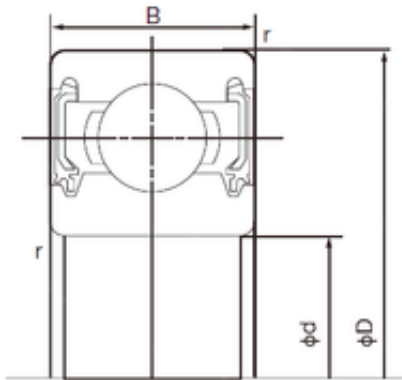


Bearing No. 6320-2NK



D	215 mm
d	100 mm
B	47 mm
C	47 mm
Width	47 mm
Weight	7.00 Kg
r min.	3 mm
da min.	114 mm
ra max.	2.5 mm
Da max.	201 mm
ra (max)	2.5 mm
da (min)	114 mm
Da (max)	201 mm
Factor fo	13.2
Size (mm)	100x215x47
Bore Type	Cylindrical Bore
Enclosure	Double Seal
Bore Size	100 mm
Width (mm)	47
Configuration	Single Row
Bearing number	6320-2NK
Outside Diameter	215 mm
Radial Clearance	0.012 to 0.036 mm
Static Load Rating	141,000 N
Bore Diameter (mm)	100
Dynamic Load Rating	173,000 N
Outer Diameter (mm)	215
Limiting Speed - Grease	3,200 rpm
Basic dynamic load rating (C)	173 kN

Basic static load rating (C0)	141 kN
----------------------------------	--------