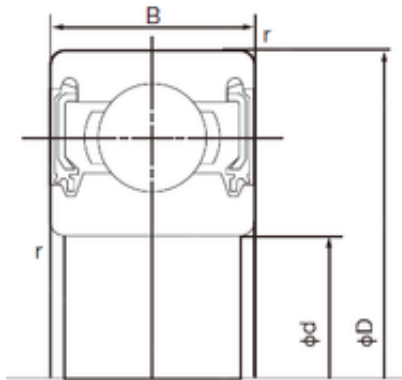


Bearing No. 6806-2NKE



D	42 mm
d	30 mm
B	7 mm
C	7 mm
r min.	0.3 mm
Weight	0.026 Kg
da min.	32 mm
Da max.	40 mm
ra max.	0.3 mm
Size (mm)	30x42x7
Width (mm)	7
Bearing number	6806-2NKE
Bore Diameter (mm)	30
Outer Diameter (mm)	42
Basic dynamic load rating (C)	5,35 kN
Basic static load rating (C0)	3,8 kN