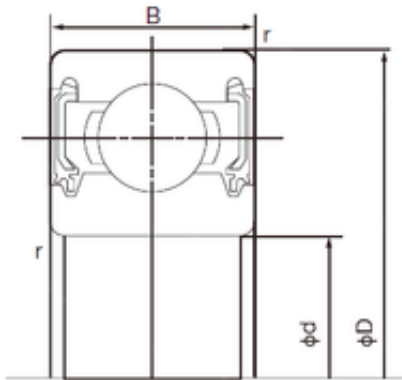


Bearing No. 6803-2NKE



D	26 mm
d	17 mm
B	5 mm
C	5 mm
r min.	0.3 mm
Weight	0.008 Kg
da min.	19 mm
Da max.	24 mm
ra max.	0.3 mm
Size (mm)	17x26x5
Width (mm)	5
Bearing number	6803-2NKE
Bore Diameter (mm)	17
Outer Diameter (mm)	26
Basic dynamic load rating (C)	2,63 kN
Basic static load rating (C0)	1,57 kN