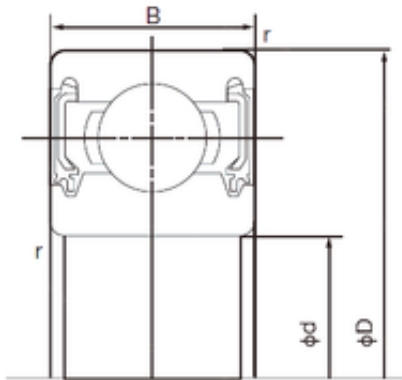


Bearing No. 6801-2NKE



D	21 mm
d	12 mm
B	5 mm
C	5 mm
r min.	0.3 mm
Weight	0.006 Kg
da min.	14 mm
Da max.	19 mm
ra max.	0.3 mm
Size (mm)	12x21x5
Width (mm)	5
Bearing number	6801-2NKE
Bore Diameter (mm)	12
Outer Diameter (mm)	21
Basic dynamic load rating (C)	1,92 kN
Basic static load rating (C0)	1,04 kN