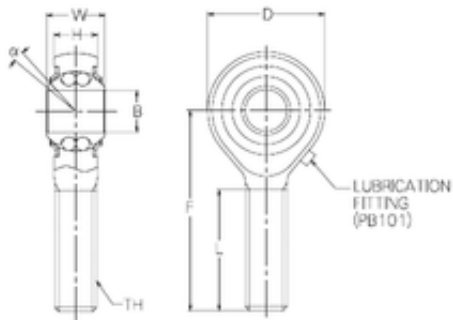


Bearing No. PBR6EFN



d	6 mm
B	6 mm
D	20 mm
F	36 mm
H	6,75 mm
L	22 mm
W	9 mm
Angle	8 °
Weight	0,019 Kg
Thread (TH)	M6x1,0
Bearing number	PBR6EFN
Bore Diameter (mm)	6
Basic dynamic load rating (C)	2,74 kN