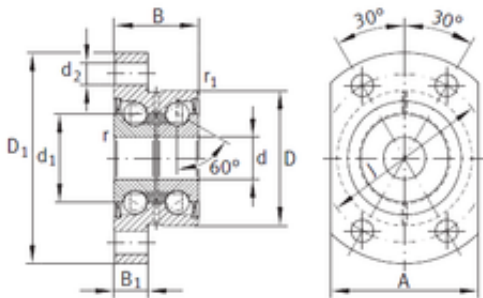


Bearing No. ZKLFA0850-2Z



| | |
|-------------------------------|------------------|
| A | 35 mm |
| J | 40 mm |
| d | 8 mm |
| D | 32 mm |
| B | 20 mm |
| C | 20 mm |
| d2 | 5,5 mm |
| D1 | 50 mm |
| B2 | 8 mm |
| d1 | 19 mm |
| Screw | M5 |
| r min. | 0,3 mm |
| da max | 25 mm |
| Weight | 0,17 Kg |
| r1 min. | 0,6 mm |
| da min. | 11 mm |
| Category | Bearings |
| Size (mm) | 8x32x20 |
| Inventory | 0.0 |
| Angle (?) | 60 ° |
| Width (mm) | 20 |
| Product Group | M06110 |
| Bearing number | ZKLFA0850-2Z |
| Weight / Kilogram | 0.17 |
| Manufacturer Name | SCHAEFFLER GROUP |
| Bore Diameter (mm) | 8 |
| Outer Diameter (mm) | 32 |
| Minimum Buy Quantity | N/A |
| Dynamic load rating axial (C) | 12,5 kN |
| | |

| | |
|----------------------------------|---------|
| Static load rating axial (C0) | 16,3 kN |
|----------------------------------|---------|