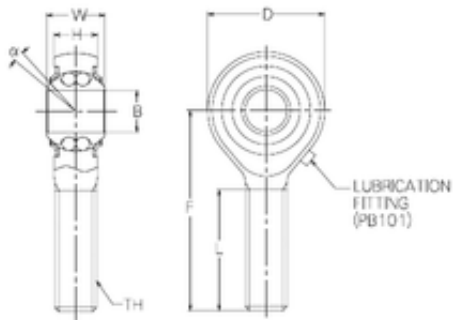


Bearing No. PBR10EFN



d	10 mm
B	10 mm
D	28 mm
F	48 mm
H	10,5 mm
L	29 mm
W	14 mm
Angle	8 °
Weight	0,06 Kg
Thread (TH)	M10x1,5
Bearing number	PBR10EFN
Bore Diameter (mm)	10
Basic dynamic load rating (C)	4,45 kN