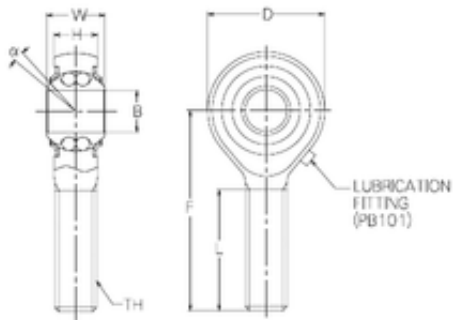


Bearing No. PBR12EFN



d	12 mm
B	12 mm
D	32 mm
F	54 mm
H	12 mm
L	33 mm
W	16 mm
Angle	7,5 °
Weight	0,087 Kg
Thread (TH)	M12x1,75
Bearing number	PBR12EFN
Bore Diameter (mm)	12
Basic dynamic load rating (C)	4,95 kN