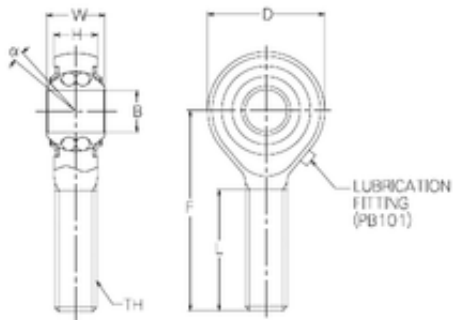


Bearing No. PBR20EFN



d	20 mm
B	20 mm
D	50 mm
F	78 mm
H	18 mm
L	47 mm
W	25 mm
Angle	7 °
Weight	0,338 Kg
Thread (TH)	M20x1,5
Bearing number	PBR20EFN
Bore Diameter (mm)	20
Basic dynamic load rating (C)	7,9 kN