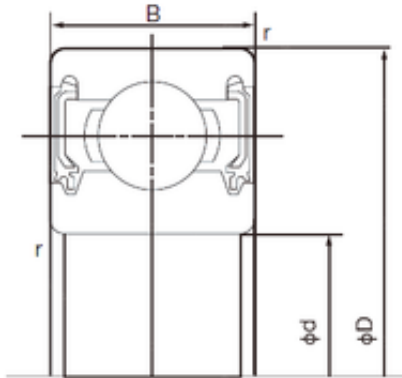


Bearing No. 6000-2NKE



D	26 mm
d	10 mm
B	8 mm
C	8 mm
r min.	0.3 mm
Weight	0.019 Kg
da min.	12 mm
Da max.	24 mm
ra max.	0.3 mm
Size (mm)	10x26x8
Width (mm)	8
Bearing number	6000-2NKE
Bore Diameter (mm)	10
Outer Diameter (mm)	26
Basic dynamic load rating (C)	4,55 kN
Basic static load rating (C0)	1,97 kN