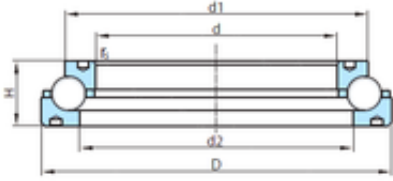


### Bearing No. PSL 212-300



D	898,525 mm
d	771,449 mm
H	63,881 mm
r	6,5 mm
d1	860,425 mm
d2	809,625 mm
Weight	65 Kg
Size (mm)	771.449x898.525x63.881
Width (mm)	63,881
Bearing number	PSL 212-300
Bore Diameter (mm)	771,449
Outer Diameter (mm)	898,525
Basic dynamic load rating (C)	493 kN