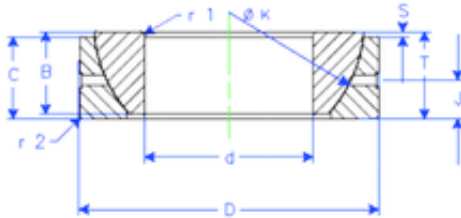


Bearing No. GE 100 SX



B	32 mm
K	141 mm
S	11,6 mm
d	100 mm
D	150 mm
T	32 mm
C	31 mm
J	16 mm
Weight	2,340081128 Kg
r1 min.	1,5 mm
r2 min.	1,5 mm
Size (mm)	100x150x32
Width (mm)	32
Bearing number	GE 100 SX
Bore Diameter (mm)	100
Outer Diameter (mm)	150
Basic dynamic load rating (C)	384 kN