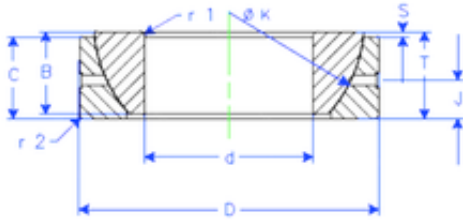


Bearing No. GE 105 SX



B	35 mm
K	148 mm
S	12,3 mm
d	105 mm
D	160 mm
T	35 mm
C	33 mm
J	17,5 mm
Weight	2,93020432 Kg
r1 min.	2 mm
r2 min.	2 mm
Size (mm)	105x160x35
Width (mm)	35
Bearing number	GE 105 SX
Bore Diameter (mm)	105
Outer Diameter (mm)	160
Basic dynamic load rating (C)	423 kN