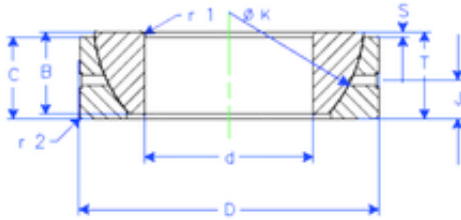


Bearing No. GE 110 SX



B	38 mm
K	155 mm
S	13 mm
d	110 mm
D	170 mm
T	38 mm
C	34 mm
J	19 mm
Weight	3,679991896 Kg
r1 min.	2 mm
r2 min.	2 mm
Size (mm)	110x170x38
Width (mm)	38
Bearing number	GE 110 SX
Bore Diameter (mm)	110
Outer Diameter (mm)	170
Basic dynamic load rating (C)	463 kN