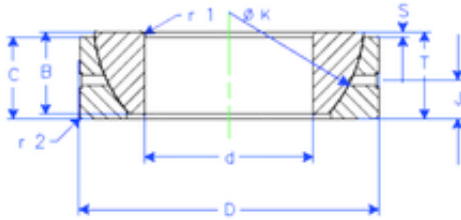


Bearing No. GE 120 SX



B	38 mm
K	168 mm
S	14,5 mm
d	120 mm
D	180 mm
T	38 mm
C	37 mm
J	19 mm
Weight	3,969837184 Kg
r1 min.	2 mm
r2 min.	2 mm
Size (mm)	120x180x38
Width (mm)	38
Bearing number	GE 120 SX
Bore Diameter (mm)	120
Outer Diameter (mm)	180
Basic dynamic load rating (C)	547 kN