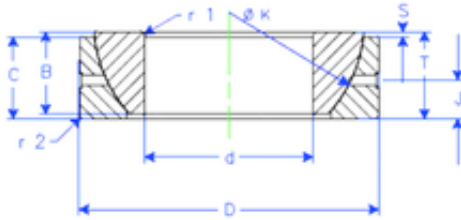


Bearing No. GE 130 SX



B	45 mm
K	188 mm
S	18 mm
d	130 mm
D	200 mm
T	45 mm
C	43 mm
J	19 mm
Weight	5,9193756 Kg
r1 min.	2,5 mm
r2 min.	2,5 mm
Size (mm)	130x200x45
Width (mm)	45
Bearing number	GE 130 SX
Bore Diameter (mm)	130
Outer Diameter (mm)	200
Basic dynamic load rating (C)	710 kN