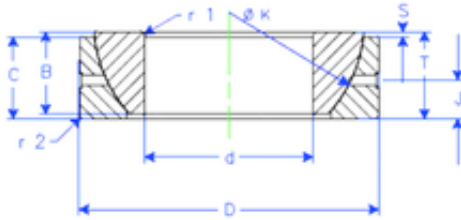


Bearing No. GE 160 SX



B	51 mm
K	225 mm
S	20 mm
d	160 mm
D	240 mm
T	51 mm
C	49 mm
J	22 mm
Weight	9,78851536 Kg
r1 min.	3 mm
r2 min.	3 mm
Size (mm)	160x240x51
Width (mm)	51
Bearing number	GE 160 SX
Bore Diameter (mm)	160
Outer Diameter (mm)	240
Basic dynamic load rating (C)	970 kN