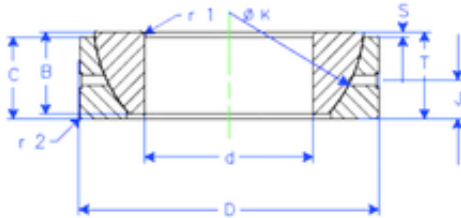


Bearing No. GE 180 SX



B	64 mm
K	260 mm
S	21 mm
d	180 mm
D	280 mm
T	64 mm
C	61 mm
J	28 mm
Weight	17,39978912 Kg
r1 min.	3 mm
r2 min.	3 mm
Size (mm)	180x280x64
Width (mm)	64
Bearing number	GE 180 SX
Bore Diameter (mm)	180
Outer Diameter (mm)	280
Basic dynamic load rating (C)	1395 kN