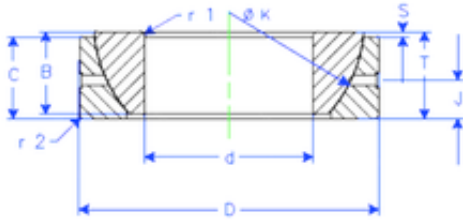


Bearing No. GE 190 SX



B	64 mm
K	275 mm
S	26 mm
d	190 mm
D	290 mm
T	64 mm
C	62 mm
J	30 mm
Weight	18,19811104 Kg
r1 min.	3 mm
r2 min.	3 mm
Size (mm)	190x290x64
Width (mm)	64
Bearing number	GE 190 SX
Bore Diameter (mm)	190
Outer Diameter (mm)	290
Basic dynamic load rating (C)	1500 kN