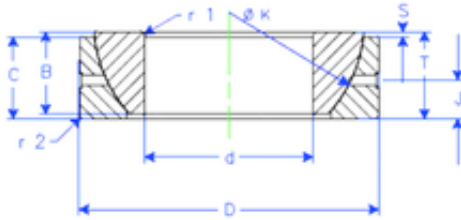


Bearing No. GE 200 SX



B	70 mm
K	290 mm
S	26 mm
d	200 mm
D	310 mm
T	70 mm
C	66 mm
J	30 mm
Weight	23,79997224 Kg
r1 min.	3 mm
r2 min.	3 mm
Size (mm)	200x310x70
Width (mm)	70
Bearing number	GE 200 SX
Bore Diameter (mm)	200
Outer Diameter (mm)	310
Basic dynamic load rating (C)	1680 kN