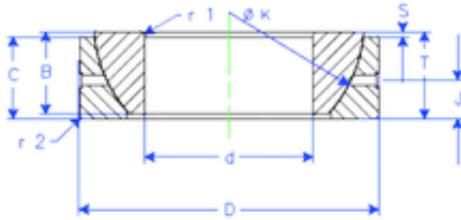


Bearing No. GE 25 SX



B	15 mm
K	42 mm
S	0,6 mm
d	25 mm
D	47 mm
T	15 mm
C	14 mm
J	7,5 mm
Weight	0,147870992 Kg
r1 min.	1 mm
r2 min.	1 mm
Size (mm)	25x47x15
Width (mm)	15
Bearing number	GE 25 SX
Bore Diameter (mm)	25
Outer Diameter (mm)	47
Basic dynamic load rating (C)	50 kN