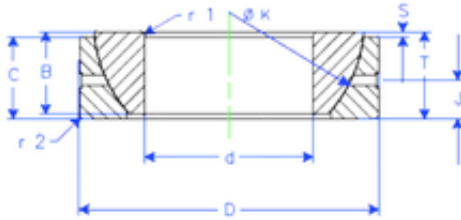


Bearing No. GE 28 SX



B	15 mm
K	47 mm
S	1 mm
d	28 mm
D	52 mm
T	16 mm
C	15 mm
J	8 mm
Weight	0,18597272 Kg
r1 min.	1 mm
r2 min.	1 mm
Size (mm)	28x52x16
Width (mm)	16
Bearing number	GE 28 SX
Bore Diameter (mm)	28
Outer Diameter (mm)	52
Basic dynamic load rating (C)	60 kN