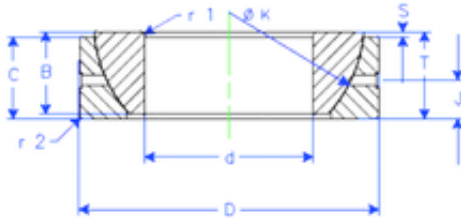


Bearing No. GE 32 SX



B	17 mm
K	52 mm
S	2 mm
d	32 mm
D	58 mm
T	17 mm
C	16 mm
J	8,5 mm
Weight	0,240857352 Kg
r1 min.	1 mm
r2 min.	1 mm
Size (mm)	32x58x17
Width (mm)	17
Bearing number	GE 32 SX
Bore Diameter (mm)	32
Outer Diameter (mm)	58
Basic dynamic load rating (C)	71 kN