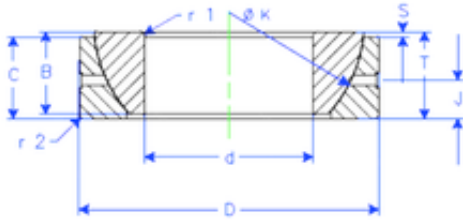


Bearing No. GE 30 SX



B	17 mm
K	50 mm
S	1,3 mm
d	30 mm
D	55 mm
T	17 mm
C	15 mm
J	8,5 mm
Weight	0,208198728 Kg
r1 min.	1 mm
r2 min.	1 mm
Size (mm)	30x55x17
Width (mm)	17
Bearing number	GE 30 SX
Bore Diameter (mm)	30
Outer Diameter (mm)	55
Basic dynamic load rating (C)	63 kN