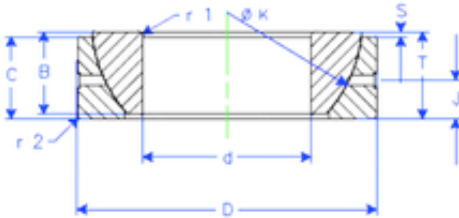


Bearing No. GE 35 SX



B	18 mm
K	56 mm
S	2,1 mm
d	35 mm
D	62 mm
T	18 mm
C	16 mm
J	9 mm
Weight	0,268072872 Kg
r1 min.	1 mm
r2 min.	1 mm
Size (mm)	35x62x18
Width (mm)	18
Bearing number	GE 35 SX
Bore Diameter (mm)	35
Outer Diameter (mm)	62
Basic dynamic load rating (C)	78 kN