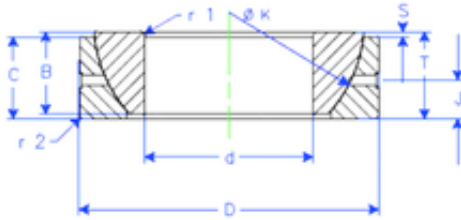


Bearing No. GE 40 SX



B	19 mm
K	62 mm
S	2,8 mm
d	40 mm
D	68 mm
T	19 mm
C	17 mm
J	9,5 mm
Weight	0,327039832 Kg
r1 min.	1 mm
r2 min.	1 mm
Size (mm)	40x68x19
Width (mm)	19
Bearing number	GE 40 SX
Bore Diameter (mm)	40
Outer Diameter (mm)	68
Basic dynamic load rating (C)	92 kN