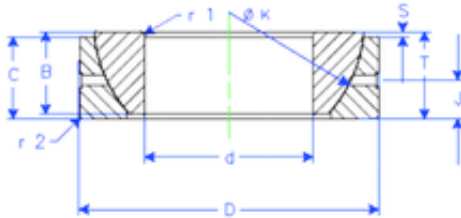


Bearing No. GE 45 SX



B	20 mm
K	69 mm
S	3,5 mm
d	45 mm
D	75 mm
T	20 mm
C	18 mm
J	10 mm
Weight	0,415943864 Kg
r1 min.	1 mm
r2 min.	1 mm
Size (mm)	45x75x20
Width (mm)	20
Bearing number	GE 45 SX
Bore Diameter (mm)	45
Outer Diameter (mm)	75
Basic dynamic load rating (C)	108 kN