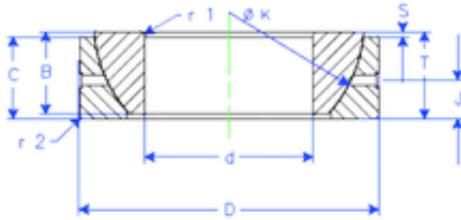


Bearing No. GE 55 SX



B	23 mm
K	82 mm
S	5 mm
d	55 mm
D	90 mm
T	23 mm
C	20 mm
J	11,5 mm
Weight	0,645007824 Kg
r1 min.	1,1 mm
r2 min.	1,1 mm
Size (mm)	55x90x23
Width (mm)	23
Bearing number	GE 55 SX
Bore Diameter (mm)	55
Outer Diameter (mm)	90
Basic dynamic load rating (C)	144 kN