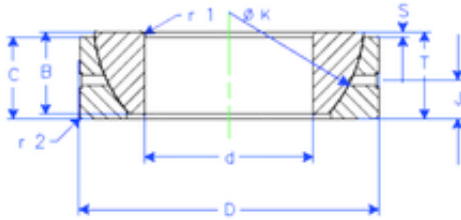


Bearing No. GE 50 SX



B	20 mm
K	74 mm
S	4,3 mm
d	50 mm
D	80 mm
T	20 mm
C	19 mm
J	10 mm
Weight	0,454952776 Kg
r1 min.	1 mm
r2 min.	1 mm
Size (mm)	50x80x20
Width (mm)	20
Bearing number	GE 50 SX
Bore Diameter (mm)	50
Outer Diameter (mm)	80
Basic dynamic load rating (C)	123 kN