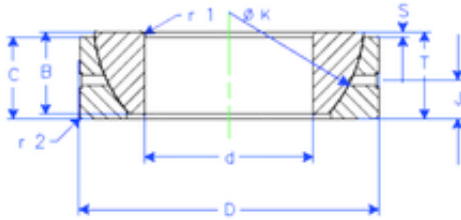


Bearing No. GE 60 SX



B	23 mm
K	89 mm
S	5,7 mm
d	60 mm
D	95 mm
T	23 mm
C	21 mm
J	11,5 mm
Weight	0,713953808 Kg
r1 min.	1,1 mm
r2 min.	1,1 mm
Size (mm)	60x95x23
Width (mm)	23
Bearing number	GE 60 SX
Bore Diameter (mm)	60
Outer Diameter (mm)	95
Basic dynamic load rating (C)	163 kN