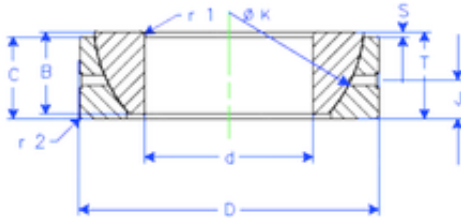


Bearing No. GE 65 SX



B	23 mm
K	94 mm
S	6,5 mm
d	65 mm
D	100 mm
T	23 mm
C	22 mm
J	11,5 mm
Weight	0,758859416 Kg
r1 min.	1,1 mm
r2 min.	1,1 mm
Size (mm)	65x100x23
Width (mm)	23
Bearing number	GE 65 SX
Bore Diameter (mm)	65
Outer Diameter (mm)	100
Basic dynamic load rating (C)	180 kN