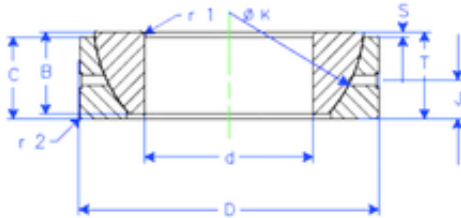


Bearing No. GE 70 SX



B	25 mm
K	102 mm
S	7,2 mm
d	70 mm
D	110 mm
T	25 mm
C	23 mm
J	12,5 mm
Weight	1,040086456 Kg
r1 min.	1,1 mm
r2 min.	1,1 mm
Size (mm)	70x110x25
Width (mm)	25
Bearing number	GE 70 SX
Bore Diameter (mm)	70
Outer Diameter (mm)	110
Basic dynamic load rating (C)	206 kN