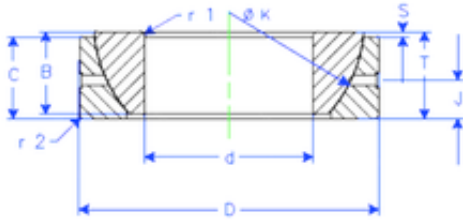


Bearing No. GE 75 SX



B	25 mm
K	107 mm
S	7,9 mm
d	75 mm
D	115 mm
T	25 mm
C	24 mm
J	12,5 mm
Weight	1,119918648 Kg
r1 min.	1,1 mm
r2 min.	1,1 mm
Size (mm)	75x115x25
Width (mm)	25
Bearing number	GE 75 SX
Bore Diameter (mm)	75
Outer Diameter (mm)	115
Basic dynamic load rating (C)	220 kN