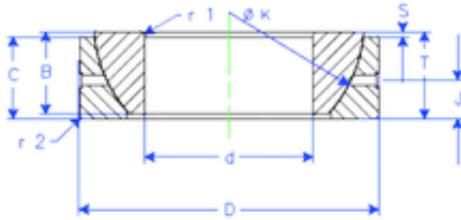


Bearing No. GE 80 SX



B	29 mm
K	115 mm
S	8,6 mm
d	80 mm
D	125 mm
T	29 mm
C	26 mm
J	14,5 mm
Weight	1,53994484 Kg
r1 min.	1,1 mm
r2 min.	1,1 mm
Size (mm)	80x125x29
Width (mm)	29
Bearing number	GE 80 SX
Bore Diameter (mm)	80
Outer Diameter (mm)	125
Basic dynamic load rating (C)	258 kN