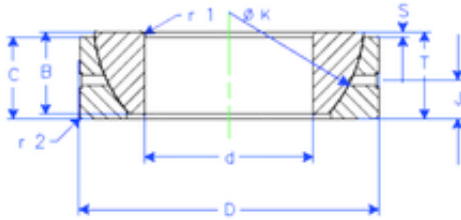


Bearing No. GE 85 SX



B	29 mm
K	122 mm
S	9,4 mm
d	85 mm
D	130 mm
T	29 mm
C	27 mm
J	14,5 mm
Weight	1,609798008 Kg
r1 min.	1,1 mm
r2 min.	1,1 mm
Size (mm)	85x130x29
Width (mm)	29
Bearing number	GE 85 SX
Bore Diameter (mm)	85
Outer Diameter (mm)	130
Basic dynamic load rating (C)	284 kN