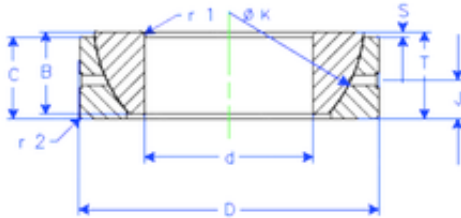


Bearing No. GE 90 SX



B	32 mm
K	129 mm
S	10,1 mm
d	90 mm
D	140 mm
T	32 mm
C	28 mm
J	16 mm
Weight	2,090151936 Kg
r1 min.	1,5 mm
r2 min.	1,5 mm
Size (mm)	90x140x32
Width (mm)	32
Bearing number	GE 90 SX
Bore Diameter (mm)	90
Outer Diameter (mm)	140
Basic dynamic load rating (C)	316 kN