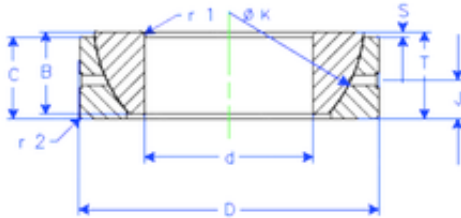


### Bearing No. GE 95 SX



B	32 mm
K	135 mm
S	10,8 mm
d	95 mm
D	145 mm
T	32 mm
C	30 mm
J	16 mm
Weight	2,219879248 Kg
r1 min.	1,5 mm
r2 min.	1,5 mm
Size (mm)	95x145x32
Width (mm)	32
Bearing number	GE 95 SX
Bore Diameter (mm)	95
Outer Diameter (mm)	145
Basic dynamic load rating (C)	350 kN