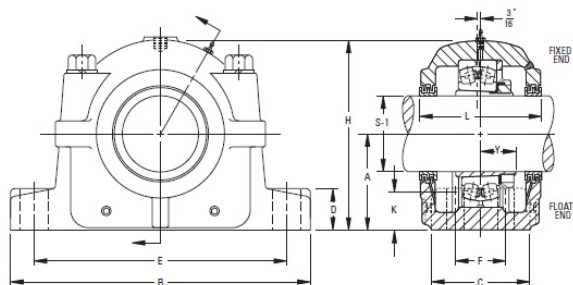


Bore Mounting Pillow Block SDAF225 and SDAF226 Series | SDAF 22530



Bearing No. SDAF 22530

| | |
|---------------------------|------------|
| Weight | SDAF530 |
| Bearing Number | 2.5781 in |
| Housing Construction | LOR 125 |
| UPC Code | 1.125 in |
| Shaft Size Type | 2.1875 in |
| Full Timken Part Number | 4 |
| Locking Style | 8.3750 in |
| Y2 - Geometry Factor | 12.8125 in |
| Y1 - Geometry Factor | SDAF22530 |
| Shaft Tolerance | 4.75 in |
| Shaft Size | 17.0000 in |
| Pre Install Clearance Min | 18.2500 in |
| Pre Install Clearance Max | 5 3/16 in |